

# JAZZ PLATE: LESSON SIX

## (F Horn)

MAJOR 7TH CHORDS  
WARM-UP: SYMMETRICAL SCALES  
APPROACH AND SURROUND NOTES  
BUILDING PENTATONIC PATTERNS  
IMPROVISATION: RHYTHM CHANGES

Musical notation showing F major 7th chords and a major 3rd scale. The chords are F, F<sup>b</sup>, F<sup>m</sup>7, F7, and Fmaj7. A bracket above the notes indicates the 'MAJOR 3RD' and 'MAJOR 7TH' intervals.

WARM-UP (1:45)

Two staves of musical notation for warm-up scales. The first staff shows the C major scale and the F major scale. The second staff shows a symmetrical scale pattern.

Ex 1 (3:00)

Exercise 1 musical notation in 4/4 time. It consists of four staves of notes with major 7th chords written above and below. The chords are: Fmaj7, Abmaj7, Gmaj7, Amaj7, Bbmaj7, Bmaj7, Cmaj7, Dbmaj7, Dmaj7, Ebmaj7, Emaj7.

Ex 2 (5:05)

Exercise 2 musical notation in 4/4 time. It consists of two staves of notes with major 7th chords written above and below. The chords are: Fmaj7, F#maj7, Gmaj7, Abmaj7, Amaj7, Bbmaj7, Bmaj7, Cmaj7, Dbmaj7, Dmaj7, Ebmaj7, Emaj7.

Ex 3 (6:10)

Exercise 3 musical notation in 4/4 time. It consists of two staves of notes with major 7th chords written above and below. The chords are: Fmaj7, Bbmaj7, Ebmaj7, Abmaj7, Dbmaj7, F#maj7, Bbmaj7, Emaj7, Amaj7, Dbmaj7, Gmaj7, Cmaj7.

2

MAJOR PENTATONIC SCALE

fmaj7

NON HARMONIC TONES

PASSING TONES      AUXILIARY TONES      APPROACH TONES\*      SURROUND TONES\*

PT   PT      UPPER AUX   LOWER AUX      FROM ABOVE      FROM BELOW      \*COVERED IN MORE DETAIL ON LESSON 10

fmaj7      ROOT   3   5      SURROUND TONES      APPROACH TONE      SURROUND TONES

PENTATONIC PATTERNS (PLEASE DOWNLOAD THE PENTATONIC SCALES CHART FOR YOUR INSTRUMENT AT [WWW.MYMUSICPB.COM/JAZZPLATE](http://WWW.MYMUSICPB.COM/JAZZPLATE))

PATTERN 1 (PENTATONIC SCALE) \* PATTERNS SHOWING G, AND E PENTATONIC TO SUIT F HORN RANGE

G PENT

E PENT OPT 1

E PENT OPT 2

PATTERN 2 (PENTATONIC SCALE IN 3RDS)

G PENT

E PENT OPT 1

E PENT OPT 2

PATTERN 3 \* PATTERNS SHOWING G PENTATONIC TO SUIT HORN RANGE

1 2 3 5

6 1 2 3

DESCENDING

1 6 5 3

2 1 6

PATTERN 3 (CHROMATIC SUBSTITUTION)

G G# A Bb

1 2 3 5

PATTERN 3 (CHROMATIC SUBSTITUTION OF BAR 1)

G G# A Bb

1 1 1 1

PATTERN 3 (TRITONE SUBSTITUTION)

G C#

1

PATTERN 3 (SHIFTING FROM SHARED TONES)

G F Eb

1 2/3 5/6

Db Bb G

1/2 3/5 6/1

4 IMPROVISATION 1 (17:05)

PLAY 4x

DEMO (16:15)

Gm7



C7



Fmaj7



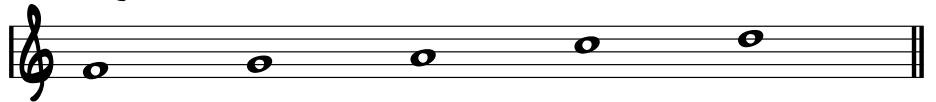
IMPROVISATION 2 (21:10)

RHYTHM CHANGES

PLAY 2x

DEMO (19:50)

F (MAJOR PENTATONIC)



Fmaj7

D7

Gm7

C7

Am7

D7

Gm7

C7



Cm7

F7

Bb7

Eb7

1. Am7

D7

Gm7

C7

2. Gm7

C7

F6



BRIDGE

A7

D7



G7

C7



Fmaj7

D7

Gm7

C7

Am7

D7

Gm7

C7



Cm7

F7

Bb7

Eb7

Gm7

C7

F6

