

JAZZ PLATE: LESSON SIX

(Viola)

MAJOR 7TH CHORDS
WARM-UP: SYMMETRICAL SCALES
APPROACH AND SURROUND NOTES
BUILDING PENTATONIC PATTERNS
IMPROVISATION: RHYTHM CHANGES

Musical notation showing six chords: B^b , B^{bb} , B^bm7 , B^b7 , B^bmaj7 , and a Major 3rd interval. The chords are represented by piano-style chord diagrams on a bass clef staff.

WARM-UP (1:45)

Two staves of musical notation. The first staff shows the F Major scale (F, G, A, Bb, C, D, E, F) and the B Flat Major scale (Bb, C, D, Eb, F, G, Ab, Bb). The second staff continues the scales with various rhythmic patterns.

Ex 1 (3:00)

Exercise 1 musical notation in 4/4 time. It consists of four staves. The first staff has a melody with notes G, A, Bb, C, D, E, F, G. Chords above include B^bmaj7 , $Cmaj7$, and $Dmaj7$. The second staff has notes F, G, Ab, Bb, C, D, Eb, F. Chords below include D^bmaj7 , $Dmaj7$, and $Ebmaj7$. The third staff has notes E, F, G, Ab, Bb, C, D, Eb. Chords below include E^bmaj7 , $Fmaj7$, and $Gbmaj7$. The fourth staff has notes D, Eb, F, G, Ab, Bb, C, D. Chords below include $Gbmaj7$, $Abmaj7$, and A^bmaj7 . There are repeat signs and a '(LISTEN)' instruction.

Ex 2 (5:05)

Exercise 2 musical notation in 4/4 time. It consists of two staves. The first staff has notes G, A, Bb, C, D, E, F, G. Chords above include B^bmaj7 , $Cmaj7$, D^bmaj7 , $Dmaj7$, and $Ebmaj7$. The second staff has notes F, G, Ab, Bb, C, D, Eb, F. Chords below include $Ebmaj7$, $Fmaj7$, $Gbmaj7$, $Gmaj7$, $Abmaj7$, and A^bmaj7 .

Ex 3 (6:10)

Exercise 3 musical notation in 4/4 time. It consists of two staves. The first staff has notes G, A, Bb, C, D, E, F, G. Chords above include B^bmaj7 , $Ebmaj7$, $Abmaj7$, D^bmaj7 , $Gbmaj7$, and B^bmaj7 . The second staff has notes F, G, Ab, Bb, C, D, Eb, F. Chords below include E^bmaj7 , A^bmaj7 , $Dmaj7$, $Gmaj7$, $Cmaj7$, and $Fmaj7$.

2

Bbmaj7

MATOR SCALE

MATOR PENTATONIC SCALE

RELATIVE MINOR PENTATONIC SCALE

NON HARMONIC TONES

PASSING TONES AUXILIARY TONES APPROACH TONES SURROUND TONES

PT PT

UPPER LOWER
AUX AUX

FROM ABOVE FROM BELOW

Bbmaj7

ROOT 3 5

5 3

ROOT

SURROUND TONES APPROACH TONE SURROUND TONES

PENTATONIC PATTERNS: (PLEASE DOWNLOAD THE PENTATONIC SCALES CHART FOR YOUR INSTRUMENT AT WWW.MYMUSICP8.COM/JAZZPLATE)

PATTERN 1 (SCALE)

C PENT

G PENT OPT 1

G PENT OPT 2

PATTERN 2 (SCALE IN 3RDS)

C

G PENT OPT 1

G PENT OPT 2

PATTERN 3

1 2 3 5

6 1 2 3

DESCENDING

1 6 5 3

2 1 6

PATTERN 3 (CHROMATIC SUBSTITUTION)

C C# D Eb

1 2 3 5

PATTERN 3 (CHROMATIC SUBSTITUTION OF BAR 1)

C C# D Eb

1 1 1 1

PATTERN 3 (TRITONE SUBSTITUTION)

C F#

1

PATTERN 3 (SHIFTING FROM SHARED TONES)

C Bb Ab

1 2/3 5/6

Gb Eb C

1/2 3/5 6/1

4 IMPROVISATION 1 (17:05)

PLAY 4x

DEMO (16:15)

Cm⁷



F⁷



B^bmaj⁷



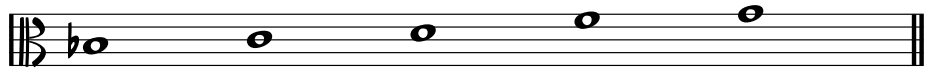
IMPROVISATION 2 (21:10)

RHYTHM CHANGES

PLAY 2x

DEMO (19:50)

B^b (MAJOR PENTATONIC)



B^bmaj⁷

G⁷

Cm⁷

F⁷

Dm⁷

G⁷

Cm⁷

F⁷



Fm⁷

B^b⁷

E^b⁷

A^b⁷

1. Dm⁷

G⁷

Cm⁷

F⁷

2. Cm⁷

F⁷

B^b⁶



BRIDGE

D⁷

G⁷



C⁷

F⁷



B^bmaj⁷

G⁷

Cm⁷

F⁷

Dm⁷

G⁷

Cm⁷

F⁷



Fm⁷

B^b⁷

E^b⁷

A^b⁷

Cm⁷

F⁷

B^b⁶

