

# JAZZ PLATE: LESSON SIX

(C Bass Clef)

MAJOR 7TH CHORDS  
WARM-UP: SYMMETRICAL SCALES  
APPROACH AND SURROUND NOTES  
BUILDING PENTATONIC PATTERNS  
IMPROVISATION: RHYTHM CHANGES

Musical notation in bass clef showing Major 7th chords: Bb, Bbb, Bbm7, Bb7, Bbmaj7, and a Major 3rd scale. The chords are represented by vertical lines with dots indicating the notes. The scale is shown as a sequence of notes on a staff.

WARM-UP (1:45)

Musical notation in bass clef showing the F Major Scale and the B Flat Major Scale. The F Major scale is written as a sequence of notes on a staff, and the B Flat Major scale is written as a sequence of notes on a staff.

Ex 1 (3:00)

Exercise 1 musical notation in bass clef, 4/4 time. It consists of four staves of music. The first staff starts with a Bbmaj7 chord and includes the instruction "(LISTEN)". The second staff has a Bbmaj7 chord and the instruction "(YOU REPEAT PREVIOUS BAR)". The third and fourth staves show a sequence of major 7th chords: Dbmaj7, Dmaj7, Ebmaj7, Emaj7, Fmaj7, Gbmaj7, Gmaj7, Abmaj7, and Amaj7. The notation includes notes and rests, with repeat signs indicating where to repeat the previous bar.

Ex 2 (5:05)

Exercise 2 musical notation in bass clef, 4/4 time. It consists of two staves of music. The first staff shows a sequence of major 7th chords: Bbmaj7, Cmaj7, Cmaj7, Dbmaj7, Dmaj7, and Ebmaj7. The second staff shows a sequence of major 7th chords: Ebmaj7, Fmaj7, Gbmaj7, Gmaj7, Abmaj7, and Amaj7. The notation includes notes and rests.

Ex 3 (6:10)

Exercise 3 musical notation in bass clef, 4/4 time. It consists of two staves of music. The first staff shows a sequence of major 7th chords: Bbmaj7, Ebmaj7, Abmaj7, Dbmaj7, Gbmaj7, and Bbmaj7. The second staff shows a sequence of major 7th chords: Emaj7, Amaj7, Dmaj7, Gmaj7, Cmaj7, and Fmaj7. The notation includes notes and rests.

2

**Bbmaj7**

MAJOR SCALE

MAJOR PENTATONIC SCALE

RELATIVE MINOR PENTATONIC SCALE

**NON HARMONIC TONES**

**Bbmaj7**

PASSING TONES

AUXILIARY TONES

APPROACH TONES

SURROUND TONES

PT PT

UPPER LOWER AUX AUX

FROM ABOVE FROM BELOW

ROOT 3 5 5 3 ROOT

SURROUND TONES

APPROACH TONE

SURROUND TONES

PENTATONIC PATTERNS: (PLEASE DOWNLOAD THE PENTATONIC SCALES CHART FOR YOUR INSTRUMENT AT [WWW.MYMUSICPB.COM/JAZZPLATE](http://WWW.MYMUSICPB.COM/JAZZPLATE))

PATTERN 1 (SCALE) \* PATTERNS SHOWING G AND D PENTATONIC TO SUIT BASS CLEF RANGE

G PENT

D PENT OPT 1

D PENT OPT 2

PATTERN 2 (SCALE IN 3RDS)

G PENT

D PENT OPT 1

D PENT OPT 2

PATTERN 3

G PENT

1 2 3 5

6 1 2 3

DESCENDING

1 6 5 3

2 1 6

PATTERN 3 (CHROMATIC SUBSTITUTION)

C C# A Bb

1 2 3 5

PATTERN 3 (CHROMATIC SUBSTITUTION OF BAR 1)

G G# A Bb

1 1 1 1

PATTERN 3 (TRITONE SUBSTITUTION)

G C#

1

PATTERN 3 (SHIFTING FROM SHARED TONES)

G F Eb

1 2/3 5/6

Db Bb G

1/2 3/5 6/1

4 IMPROVISATION 1 (17:05)

PLAY 4x

DEMO (16:15)

Cm<sup>7</sup>



F<sup>7</sup>



Bbmaj<sup>7</sup>



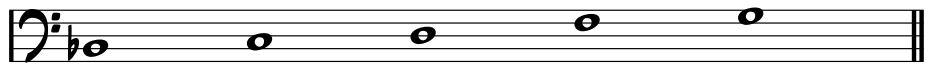
IMPROVISATION 2 (21:10)

RHYTHM CHANGES

PLAY 2x

DEMO (19:50)

Bb (MAJOR PENTATONIC)



Bbmaj<sup>7</sup>

G<sup>7</sup>

Cm<sup>7</sup>

F<sup>7</sup>

Dm<sup>7</sup>

G<sup>7</sup>

Cm<sup>7</sup>

F<sup>7</sup>



Fm<sup>7</sup>

Bb<sup>7</sup>

Eb<sup>7</sup>

Ab<sup>7</sup>

1. Dm<sup>7</sup>

G<sup>7</sup>

Cm<sup>7</sup>

F<sup>7</sup>

2. Cm<sup>7</sup>

F<sup>7</sup>

Bb<sup>b</sup>



D<sup>7</sup>

G<sup>7</sup>



C<sup>7</sup>

F<sup>7</sup>



Bbmaj<sup>7</sup>

G<sup>7</sup>

Cm<sup>7</sup>

F<sup>7</sup>

Dm<sup>7</sup>

G<sup>7</sup>

Cm<sup>7</sup>

F<sup>7</sup>



Fm<sup>7</sup>

Bb<sup>7</sup>

Eb<sup>7</sup>

Ab<sup>7</sup>

Cm<sup>7</sup>

F<sup>7</sup>

Bb<sup>b</sup>

