

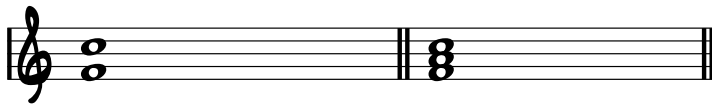
# JAZZ PLATE: LESSON TWO

(Horn in F)

PERFECT 5TH  
 MAJOR CHORD  
 REVIEW MAJOR 3RD PATTERNS  
 NONHARMONIC TONES  
 RHYTHMIC ANTICIPATION  
 IMPROVISATION: CALL AND RESPONSE

PERFECT 5TH

MAJOR CHORD



REVIEW (LESSON 1 EX 3)  
 (2:00)

6 NOTES OF B FLAT MAJOR SCALE

F Bb Eb Ab Db Gb

6 NOTES OF F MAJOR SCALE

B E A D G C

The review section consists of two staves of music. The first staff shows the B flat major scale (F, Bb, Eb, Ab, Db, Gb) with a bracket above it labeled '6 NOTES OF B FLAT MAJOR SCALE'. The second staff shows the F major scale (F, B, E, A, D, G, C) with a bracket above it labeled '6 NOTES OF F MAJOR SCALE'.

EX 1 (3:45)

F (LISTEN) (YOU REPEAT PREVIOUS BAR) Gb G

Ab A Bb

B C Db

D Eb E

Exercise 1 is a call and response exercise in 4/4 time. It consists of four staves of music. The first staff starts with a whole note F, followed by a bar with a repeat sign. The second staff starts with a whole note Gb, followed by a bar with a repeat sign. The third staff starts with a whole note G, followed by a bar with a repeat sign. The fourth staff starts with a whole note A, followed by a bar with a repeat sign. The fifth staff starts with a whole note Bb, followed by a bar with a repeat sign. The sixth staff starts with a whole note B, followed by a bar with a repeat sign. The seventh staff starts with a whole note C, followed by a bar with a repeat sign. The eighth staff starts with a whole note Db, followed by a bar with a repeat sign. The ninth staff starts with a whole note D, followed by a bar with a repeat sign. The tenth staff starts with a whole note Eb, followed by a bar with a repeat sign. The eleventh staff starts with a whole note E, followed by a bar with a repeat sign. The twelfth staff ends with a double bar line and repeat dots.

EX 2 (5:42)

F Gb G Ab A Bb

B C Db D Eb E

Exercise 2 is a call and response exercise in 4/4 time. It consists of two staves of music. The first staff starts with a whole note F, followed by a bar with a repeat sign. The second staff starts with a whole note Gb, followed by a bar with a repeat sign. The third staff starts with a whole note G, followed by a bar with a repeat sign. The fourth staff starts with a whole note Ab, followed by a bar with a repeat sign. The fifth staff starts with a whole note A, followed by a bar with a repeat sign. The sixth staff starts with a whole note Bb, followed by a bar with a repeat sign. The seventh staff starts with a whole note B, followed by a bar with a repeat sign. The eighth staff starts with a whole note C, followed by a bar with a repeat sign. The ninth staff starts with a whole note Db, followed by a bar with a repeat sign. The tenth staff starts with a whole note D, followed by a bar with a repeat sign. The eleventh staff starts with a whole note Eb, followed by a bar with a repeat sign. The twelfth staff starts with a whole note E, followed by a bar with a repeat sign. The thirteenth staff ends with a double bar line and repeat dots.

EX 3 (6:50)

F Bb Eb Ab Db Gb

B E A D G C

Exercise 3 is a call and response exercise in 4/4 time. It consists of two staves of music. The first staff starts with a whole note F, followed by a bar with a repeat sign. The second staff starts with a whole note Bb, followed by a bar with a repeat sign. The third staff starts with a whole note Eb, followed by a bar with a repeat sign. The fourth staff starts with a whole note Ab, followed by a bar with a repeat sign. The fifth staff starts with a whole note Db, followed by a bar with a repeat sign. The sixth staff starts with a whole note Gb, followed by a bar with a repeat sign. The seventh staff starts with a whole note B, followed by a bar with a repeat sign. The eighth staff starts with a whole note E, followed by a bar with a repeat sign. The ninth staff starts with a whole note A, followed by a bar with a repeat sign. The tenth staff starts with a whole note D, followed by a bar with a repeat sign. The eleventh staff starts with a whole note G, followed by a bar with a repeat sign. The twelfth staff starts with a whole note C, followed by a bar with a repeat sign. The thirteenth staff ends with a double bar line and repeat dots.

2 NONHARMONIC TONES:

RHYTHMIC ANTICIPATION:

Musical notation showing three measures. The first measure is labeled 'F' and 'PASSING NOTES:'. The second measure is labeled 'F UPPER' and 'AUXILIARY NOTES'. The third measure is labeled 'F' and 'LOWER'. The notes are: F4, G4, A4, B4, C5, B4, A4, G4, F4.

Ex 4 (10:15)

Musical notation for Exercise 4 in 4/4 time, consisting of four staves. The first staff starts with 'F (LISTEN)' and '(YOU REPEAT PREVIOUS BAR)'. The notes are: F4, G4, A4, B4, C5, B4, A4, G4, F4. The second staff starts with 'Ab' and 'A'. The notes are: Ab4, Gb4, F4, E4, D4, C4, B3, A3. The third staff starts with 'B' and 'C'. The notes are: B4, A4, G4, F4, E4, D4, C4, B3, A3. The fourth staff starts with 'D' and 'Eb'. The notes are: D4, C4, B3, A3, G3, F3, E3, D3. The word 'SIM' is written below the second staff.

Ex 5 (12:12)

Musical notation for Exercise 5 in 4/4 time, consisting of two staves. The first staff starts with 'F', 'Gb', 'G', 'Ab', 'A', 'Bb'. The notes are: F4, G4, A4, B4, C5, B4, A4, G4, F4. The second staff starts with 'B', 'C', 'Db', 'D', 'Eb', 'E'. The notes are: B4, A4, G4, F4, E4, D4, C4, B3, A3. The word 'SIM' is written below the first staff.

Ex 6 (13:45)

Musical notation for Exercise 6 in 4/4 time, consisting of two staves. The first staff starts with 'F', 'Bb', 'Eb', 'Ab', 'Db', 'Gb'. The notes are: F4, G4, A4, B4, C5, B4, A4, G4, F4. The second staff starts with 'B', 'E', 'A', 'D', 'G', 'C'. The notes are: B4, A4, G4, F4, E4, D4, C4, B3, A3. The word 'SIM' is written below the first staff.

OPTIONAL DECENDING PATTERNS TO LEARN WITH EACH CHORD:

EX 1 F

Musical notation for Ex 1 showing a descending pattern for the F chord: F4, A4, C5, B4, A4, G4, F4. The notes are labeled '5TH', '3RD', and 'ROOT'.

EX 4 F

Musical notation for Ex 4 showing a descending pattern for the F chord: F4, G4, A4, B4, C5, B4, A4, G4, F4. The notes are labeled '5TH', '3RD', '2ND', and 'ROOT'.

